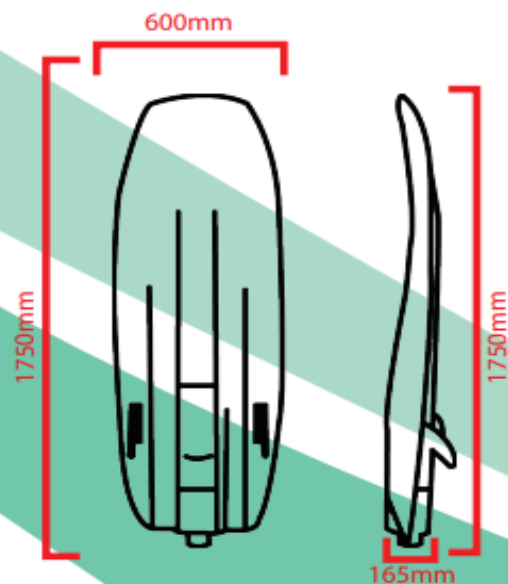


## 01. NOTICE TO USERS

- 1, Power surfing is an extreme sport. For this reason, we strongly recommend that all jet-powered should not be used by individuals under the age of 16. They are also not suitable for pregnant women, the elderly, patients with high blood pressure and heart diseases, as well as individuals who are drowsy, fatigued, intoxicated, or injured.
- 2, Do not use the surfboard without the required protective gear: (a) A helmet  
(b) Elbow and knee protectors  
(c) A life jacket
- 3, Do not use the surfboard at depths less than 50 cm, as this would increase the chances of damaging the surfboard. Avoid sandy waters as well as waters filled with plant life, waste, and other such garbage.
- 4, After using the surfboard in seawater, flush the power system of the device with fresh water for over 2 minutes to prevent corrosion over time.

## 02. PRODUCT TECHNICAL PARAMETERS



<b>Product Model</b>	Aqua Tron
<b>Dynamic System Coding Model</b>	Immersion Forced Cooling
<b>Shell Material</b>	3K/12K Carbon Fibre Material
<b>Surface Pattern</b>	Customizable
<b>Total Package Size</b>	1900*700*280
<b>Total Package Weight</b>	32kg
<b>Plate Size</b>	17550*600*165
<b>Plate Weight</b>	7.5kg
<b>Max Rider Weight</b>	120kg
<b>Battery Weight</b>	16kg
<b>Battery Capacity</b>	72V 30A
<b>Charging Time</b>	About 2-3 hours
<b>Top Speed</b>	55km/h
<b>Full Speed Endurance</b>	About 30-40 Minutes
<b>Battery Power Replacement</b>	Quick Charge
<b>Battery Life</b>	About 900 charges
<b>Brand of Electric Core</b>	Samsung

## 03. OPERATION STEPS

- 1, Load the battery into the designated part on the surfboard then put the designated screws in place securely before putting the surfboard in the water.(see image 1, and 2)



(picture 1)



(picture 2)

- 2, Attach the safety bracelet to your wrist and insert the bolt into the designated hole behind the speed control handle (see image 3, 4, and 5).



(picture 3) (picture 4) (picture 5)

- 3, Install the surfboard's fin by attaching it to the bottom of the surfboard (see image 6)
- 4, Turn on the device and check to make sure the indicators are working properly. The power indicator light (green) would turn on once the device is on. Wait for about three seconds before you begin using the surfboard. If they aren't, we recommend that you choose another board and contact any of our dealers near you.
- 5, To start surfing, press the speed control handle. You can adjust how fast the surfboard goes by adjusting how hard you squeeze the speed control handle. Remember not to surf at depths less than 50 cm, in sandy waters, or in waters containing garbage.
- 6, Pay attention to your indicator lights as you surf. Once both lights start flashing at the same time or the red one starts flashing alone, that's a sign that the surfboard is running low on power or is experiencing some fault or the other, respectively. Return to shore to get the surfboard recharged or looked out the moment you notice any of these signs.
- 7, When not in use, take out the battery and store both the battery and the board properly.



(picture 6)

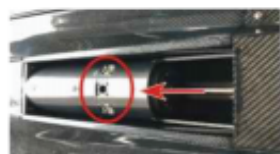


(picture 7)



**SurfSkateFly**  
create your wave

- 8, To charge the battery, loosen the four screws securing the battery in place to take the battery out of the surfboard. Open the protective cover over the battery's punch hole, and charge it till it is fully charged.
- 9, After using the surfboard in seawater, flush the power system of the device with fresh water for over 2 minutes to prevent corrosion over time.
- 10, When the surfboard is not in use for a long period of time, take the battery out of the device. Ensure to charge any unused battery at least once every 2 months to prevent unreversible battery damage.
- 11, Clean the surfboard's filter system at least once every three months. Open the filter system (see image 8), remove each filter, and wash them properly in clean water. Place the board (with the filters removed) in clean water as well, then start and stop the motor at low speeds for about three minutes before stopping the exercise and replacing the filters.



(picture 8)

#### 4. CHARGER INSTRUCTION

When connected to a power supply, the indicator light on the charger turns from orange to red and then to green. Wait till the indicator light turns green before connecting the charger to your battery.

Once connected to a battery, the charger's indicator turns back to red. This is a sign that the battery is being charged. Once the battery is fully charged, the charger's indicator light changes from red to green. This usually takes an average of 2-3 hours.

The charger of each surfboard comes with the United State's national standard plug. Customers from other parts of the world might need to purchase a conversion plug.

#### 5. STRUCTURAL DRAWING OF SLAB



**In the case board failure or fault, please contact the nearest SurfSkateFly agent or factory in your location. Do not attempt to disassemble, adjust, or repair this product without express permission, as this could disqualify you from enjoying SurfSkateFly's after-sale services.**

#### AQUA TRON ELECTRIC SURFBOARD



Thank you for choosing our electric surfboard, Before use, Please read this manual carefully.